

NON-SHRINK FAST SETTING HYDRAULIC CEMENTITIOUS PLUGGING MORTAR



CWS Fastplug™ is a fast-setting mortar composed of cement, halting the flow of water from cracks, holes, or openings in concrete, masonry, and various substrates. Exhibits slight expansion without any shrinkage, initiates the hardening process within seconds and achieves a set state in three to five minutes, depending on the ambient temperature. Needs only water for the mixing process.

TYPICAL APPLICATIONS

- Instantly seals leaks in concrete surfaces, solid masonry, and other structurally sound supports.
- Ideal for emergency repairs on water pipes, even when the pipes are under pressure.
- Suitable for promptly plugging gas leaks and sealing connections between slabs and walls with a shoulder ending.
- Can be used in cold concrete joints.
- Anchoring bolts, and other accessories that require immediate application.
- Effective in basements, tunnels, and sewers to halt water under pressure.

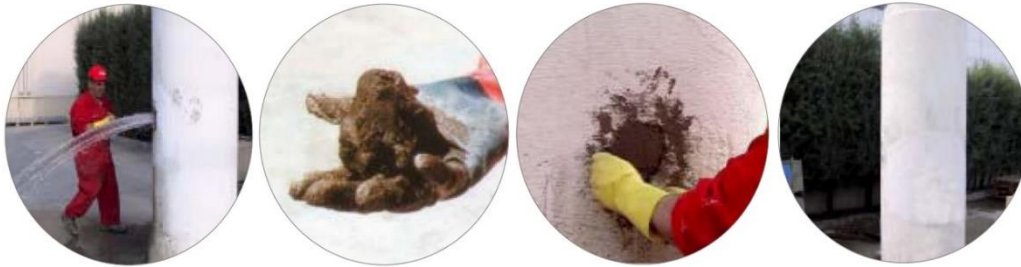
ADVANTAGES

- Does not contract or become weak due to its exothermic reaction.
- Expands in volume. Its rapid setting, which takes three to five minutes, can be controlled by adding warm or cold water, allowing for either acceleration or deceleration. The setting may even be instantaneous.
- Appropriate maintenance material for homes & industry.
- Non-toxic, safe to use with drinking water.
- Its mechanical properties are comparable to those of concrete, and in some cases, even superior.
- Sets under water.
- Does not contain chlorides.
- Easy to use.

APPLICATION

Application

Apply CWS Fastplug using a trowel, spatula, or by hand. When applying by hand, like any abrasive material, it is essential to use protective rubber gloves. **For full instructions request the CWS Fastplug Technical Data Sheet.**



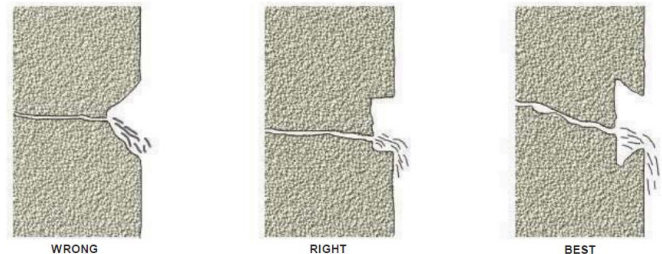
Sealing large cracks and joints

Mixing

Only prepare the quantity of CWS Fastplug that can be applied within a three-minute timeframe. In the case of a water leak, mix only the amount manageable with your hand. Utilize a plastic or rubber container, fill it with the necessary amount of CWS Fastplug, and gradually add water until achieving a consistency akin to cement mortar. For every 1kg of CWS Fastplug, approximately 0.28 liters of water are required, with variations depending on weather conditions.

Surface preparation and application

Ensure that all cracks possess a minimum depth of 4cm and an opening measuring 3-4cm. Execute a square-shape cut, preferably dovetail, on the surface to which the material will be applied, avoiding the "V" shape. Refer to the drawing on the right, for visual guidance. Thoroughly clean the surface, removing all loose materials. If water is not present at the time of application, wet the surface. Apply CWS Fastplug without exerting force.



SURFACE CONSUMPTION

1kg of CWS Fastplug fills approximately 620cm³ of space, depending on the amount of water used.

PACKING & STORAGE

CWS Fastplug is supplied in 5kg cans. It has a shelf life of 3-6 months, if stored as shipped, in unopened containers

WARRANTY

Concrete Waterproofing Systems Ltd warrants that the products manufactured by it conform to the formulation standards contained in all components in their proper

proportion and are free from material defects. If any of the products are found to be defective, the subsequent liability to Concrete Waterproofing Systems Ltd shall be limited only to the replacement of the product proven to be defective and shall not be liable for any other claim or for incidental or any consequential damages that may arise directly or indirectly with the said defective product. The user shall determine the suitability of the product for its intended use and the user assumes all liability in connection therein and Concrete Waterproofing Systems Ltd shall not be liable save for terms of this warranty.



Concrete Waterproofing Systems Ltd
PO Box 389, Northbridge, NSW 1560 Australia
Telephone: 02 9967 5534
Fax: 02 9967 84518
Website: www.cswwaterproofing.com
Email: info@cswwaterproofing.com